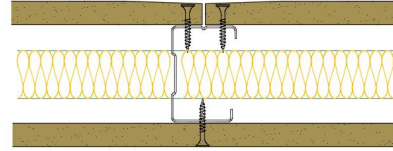


50-K-51(25) - SPEEDLINE System Data Sheet - Version V1 (24-10-23)

SPEEDLINE 50mm 'C' Stud Partition @600mm Ctrs,
with Knauf 12.5mm Wallboard each side, 25mm
APR



System Performance Breakdown

Fire Resistance:

BS476 Part 22:1987:

Test Ref & Date or Applied Ref & Report:

Max Height:

Thickness:

Duty Grade: BS 5234: Part 2:1992:

Sound Insulation:

30/30 Minutes (Integrity/Insulation).

BTC 17436F - BRE Report P102396-1011B

Refer to Speedline Specification Clause

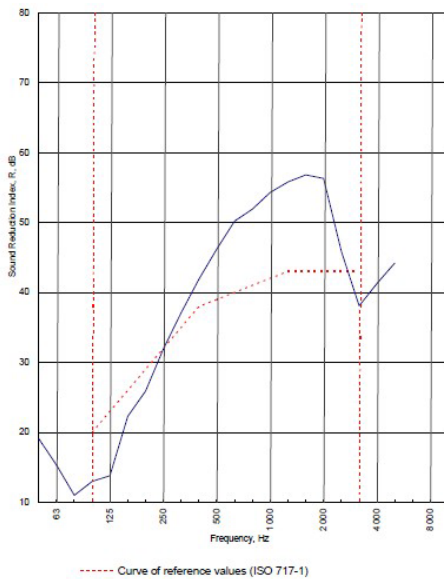
77 mm. (At Base Track, Excluding Finishes)

Medium - Annexes A-F

39 R_wdB, Date Tested or Assessed Against - 15/06/2010

Test Code:
H17386AA
Test Date:
15/06/2011

Freq. Hz	R dB
50	19.1
63	15.3
80	11.0
100	13.0
125	13.8
160	22.3
200	25.9
250	31.9
315	37.1
400	41.9
500	46.2
630	50.2
800	51.9
1 000	54.3
1 250	55.8
1 600	56.8
2 000	56.3
2 500	45.9
3 150	38.1
4 000	41.3
5 000	44.2
6 300	
8 000	
10 000	



Rating according to BS EN ISO 717-1:1997
R_w (C;Ctr) = 39 (-3;-9) dB
Max dev. 9.2 dB at 125 Hz

C ₅₀₋₃₁₅₀ = -4 dB	C ₅₀₋₅₀₀₀ = -3 dB	C ₁₀₀₋₅₀₀₀ = -2 dB
C _{9,50-3150} = -12 dB	C _{9,50-5000} = -12 dB	C _{9,100-5000} = -9 dB

TESTED AT ONE OF THE UKAS ACCREDITED LABORATORIES BELOW

- B.T.C (H-Ref on Graph)
- B.R.E
- AIRO
- S.R.L

Customer: **Metsec plc Hepsec Division**

BTC 17386A: Page 9 of 11



SPEEDLINE Drywall Systems, Adsetts House, 16 Europa View, Sheffield Business Park, Sheffield, S9 1XH.

Tel: 0114 231 8030.

Email: enquiries@speedlinedrywall.co.uk

(As per the requirements set out in ISO/IEC 17025:2017 regarding test data the results stated have been carried out by voestalpine Metsec plc as part of the contract to supply Speedline Metal Sections to SIG Plc)